

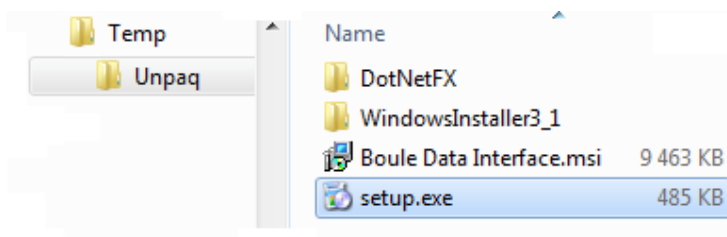
Dokumentnummer/Document Number 13626-1	Titel/Title BM800 Data Interface - Installation Instructions	Sida/Page 1/8
Utfärdare/Originator Mats Rova	Godkänd av/Approved by Fredrik Flöjt	Gäller från/Effective date 2010-06-17

1. Introduction

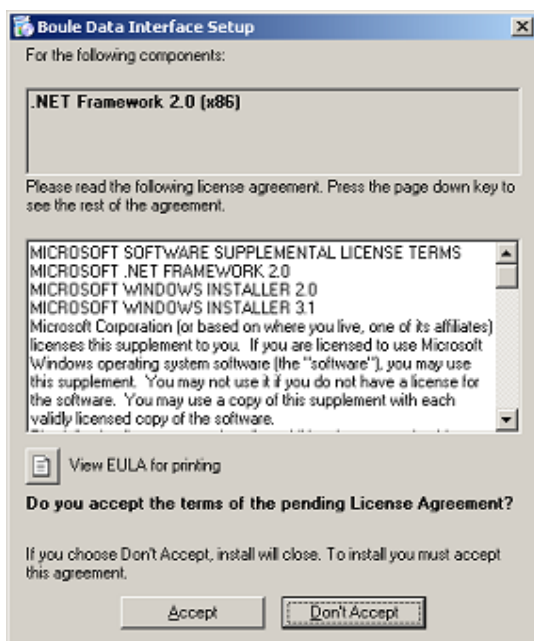
BM800 Data Interface (BDI) is intended for transferring data from BM800 instrument to PC or as a data interface between BM800 and LIS systems. This document is a reference for BDI program and USB driver installation.

2. BM800 Data Interface Installation

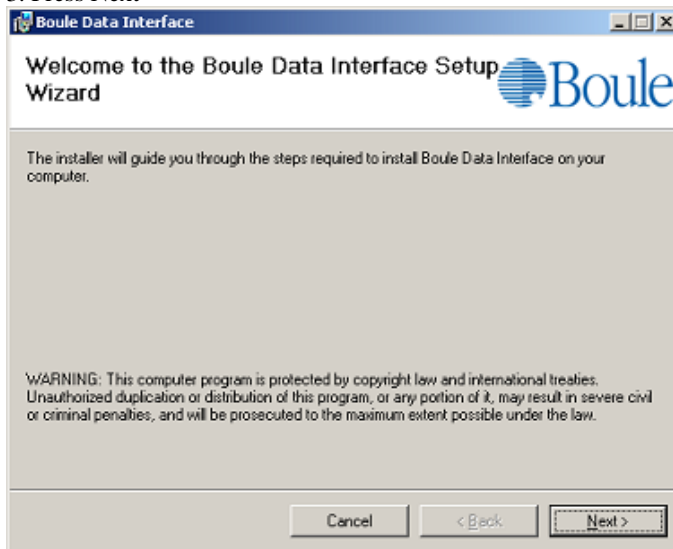
1. Unpack content of zip-file to temporary folder and double click Setup



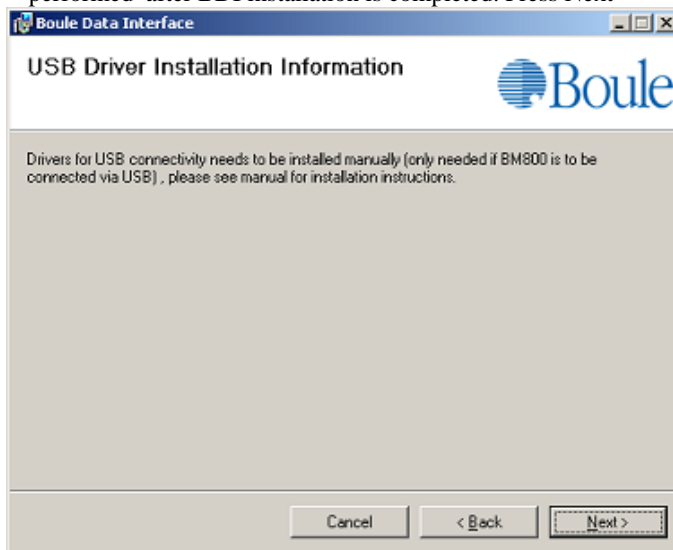
2. Press Accept (This step may not be included depending on already installed .NET version)



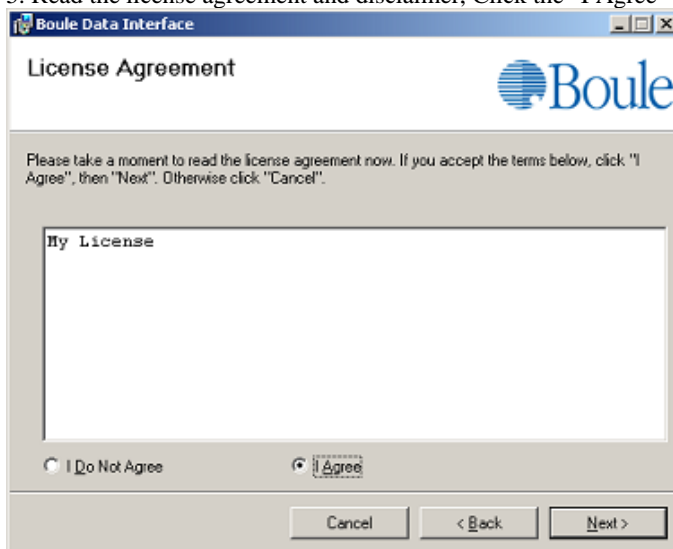
3. Press Next



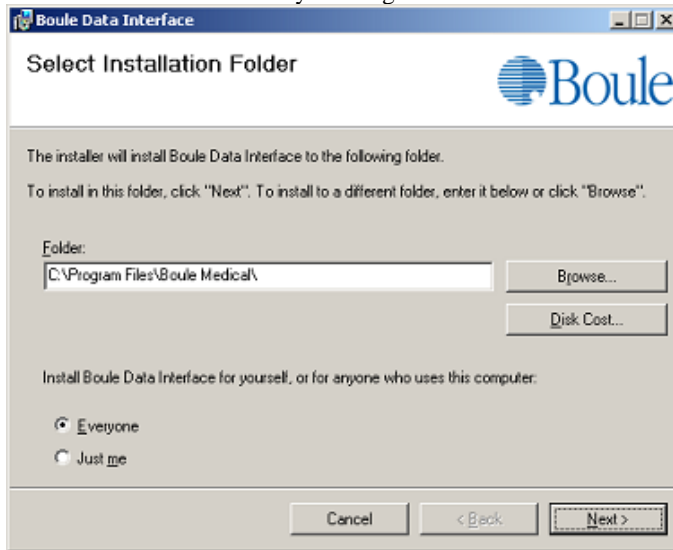
4. If BM800 is to be connected to PC via USB port, drivers need to be installed manually. This should be performed after BDI installation is completed. Press Next



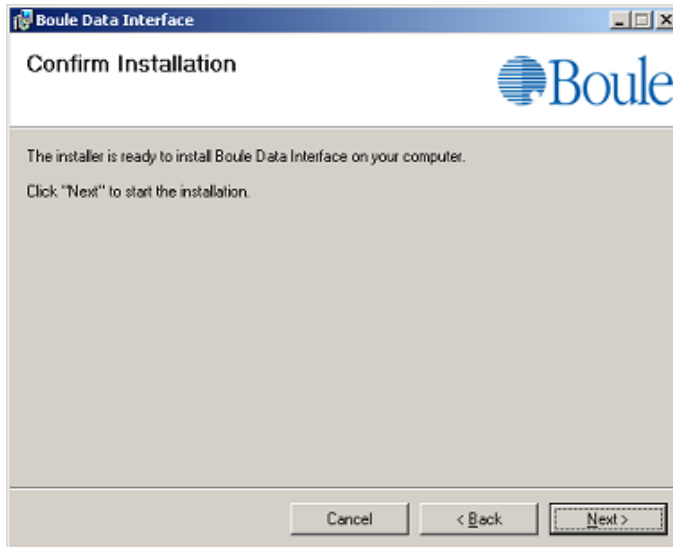
5. Read the license agreement and disclaimer, Click the "I Agree" box and then press Next.



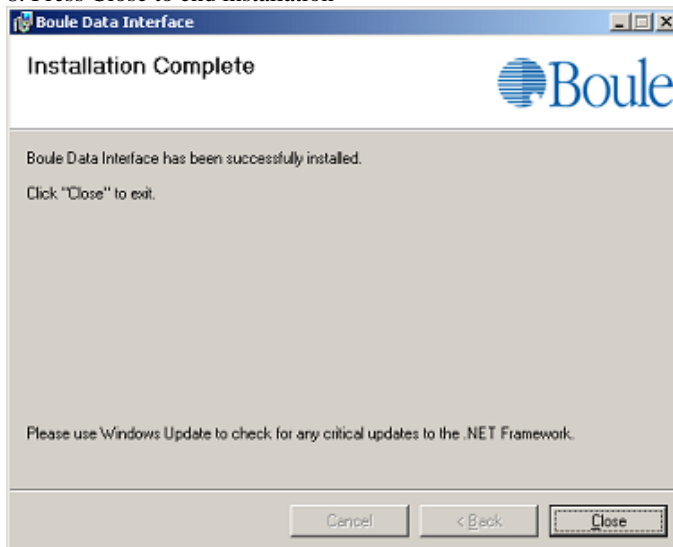
6. Select installation folder by clicking the “Browse” button or use the pre-selected folder. Press Next



7. Press Next to start installation



8. Press Close to end installation

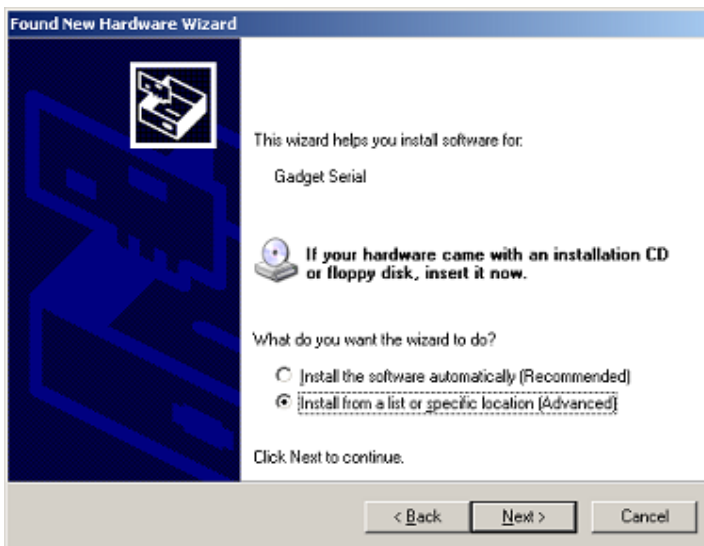


3. USB Driver Installation

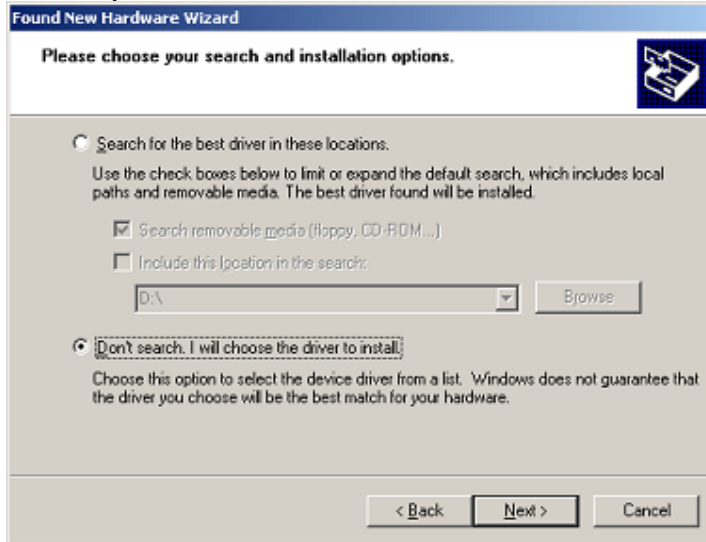
1. Connect BM800 to available PC USB port, Windows “Found New Hardware Wizard” will start automatically. Select option “No, not this time” and press button “Next”.



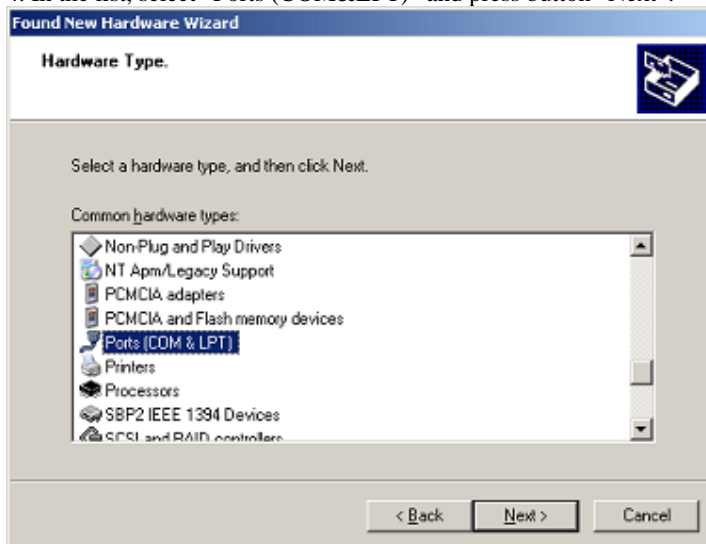
2. Select option “Install from a list or specific location (Advanced)” and press button “Next”.



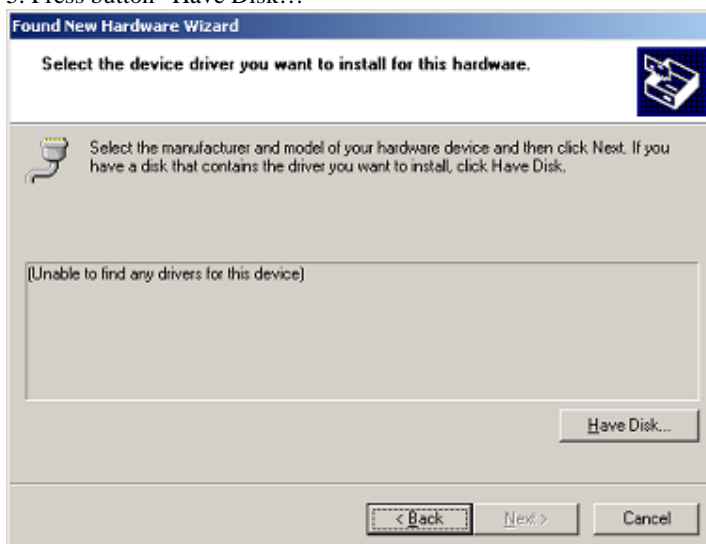
3. Select option “Don’t search. I will choose the driver to install” and press button “Next”.



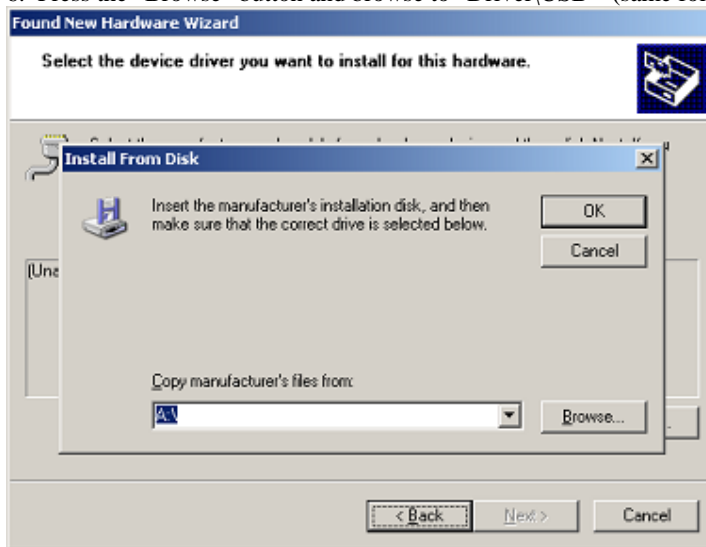
4. In the list, select “Ports (COM&LPT)” and press button “Next”.



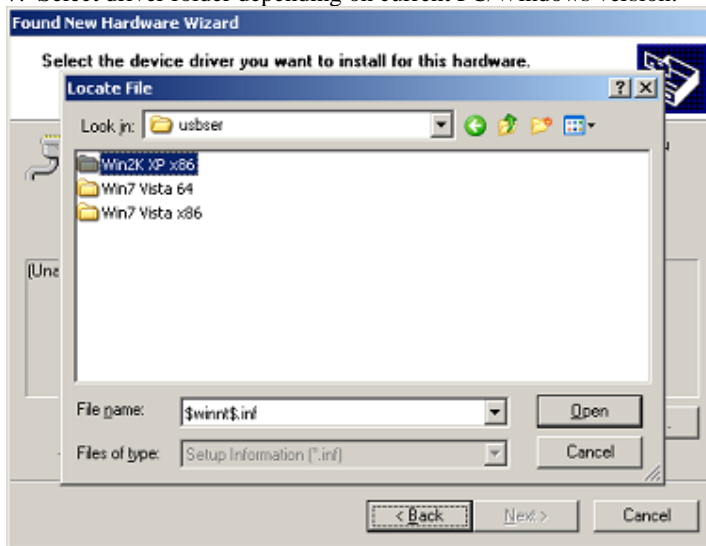
5. Press button “Have Disk...”



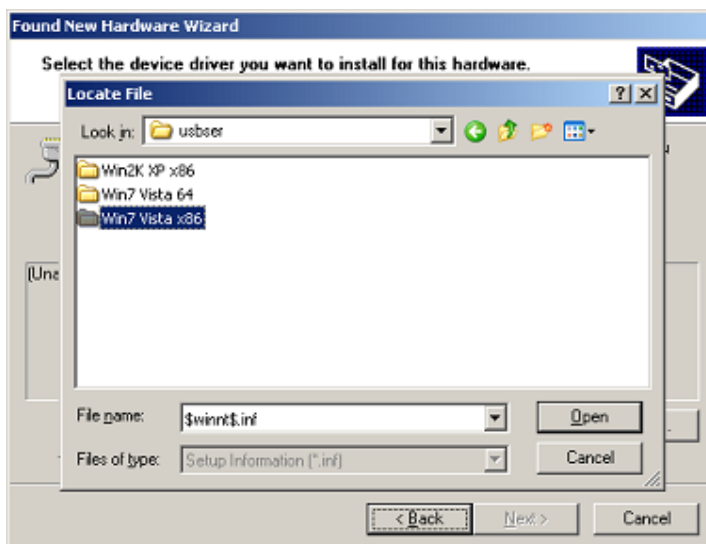
6. Press the “Browse” button and browse to “Driver\USB” (same folder that the zip-file was unpacked to)



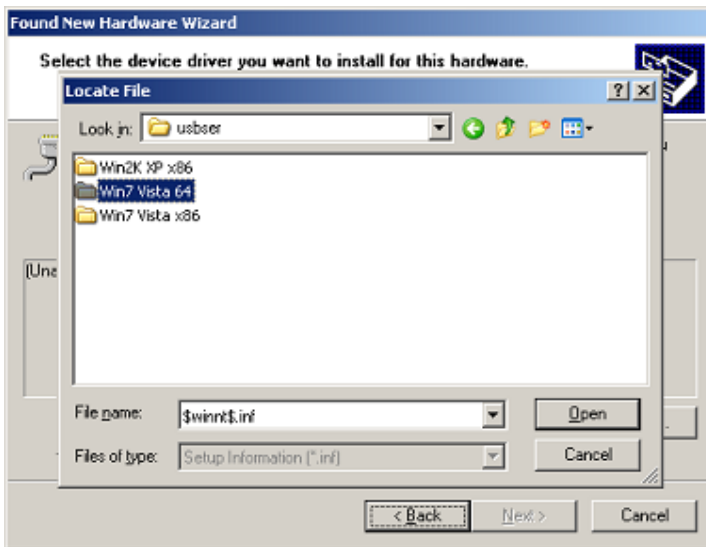
7. Select driver folder depending on current PC/Windows version:



PC(x86), Windows (Windows 2000, Windows XP)

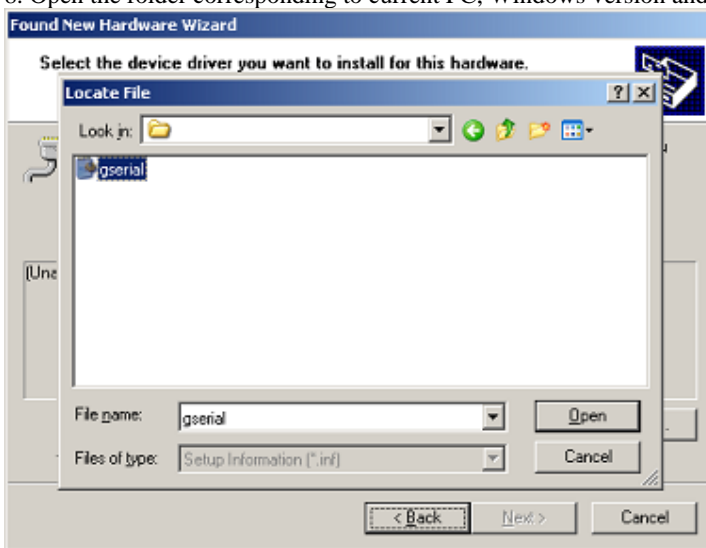


PC(x86), Windows (Windows Vista-32, Windows 7-32)

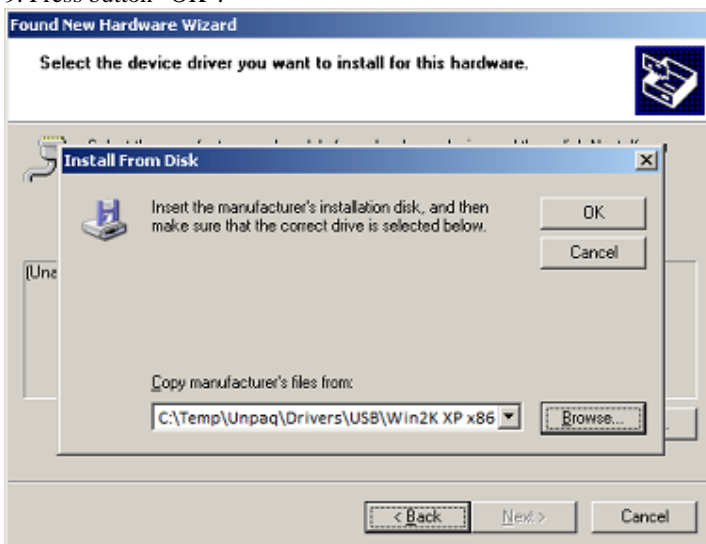


PC(64), Windows (Windows Vista-64, Windows 7-64)

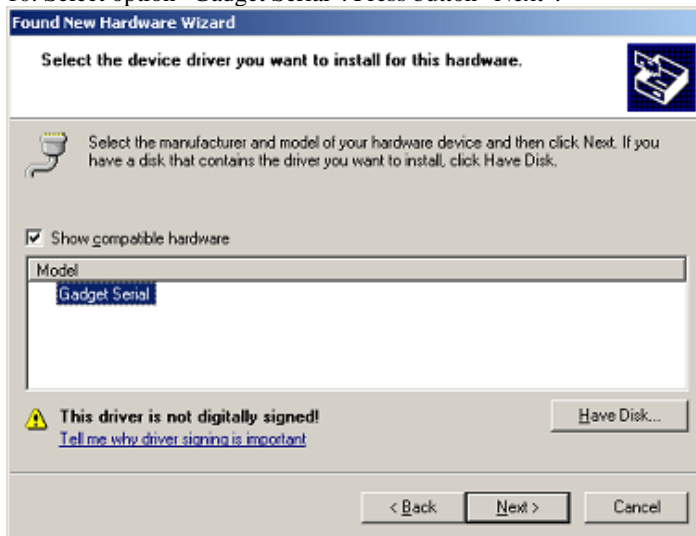
8. Open the folder corresponding to current PC, Windows version and select file “gserial”. Press “Open”



9. Press button “OK”.



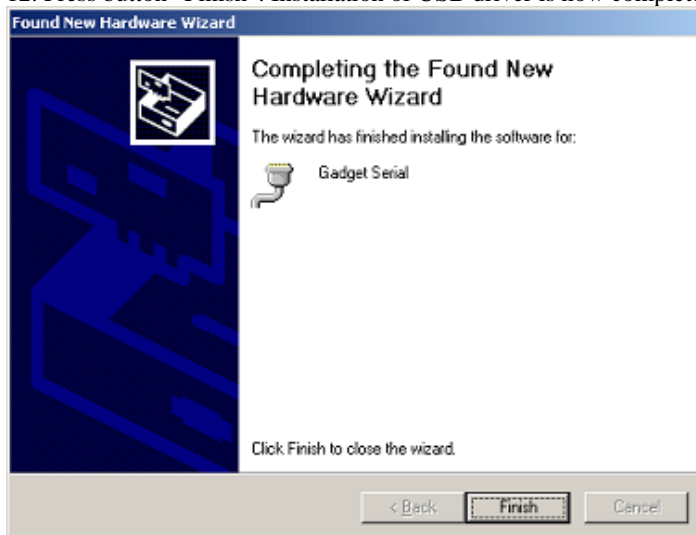
10. Select option "Gadget Serial". Press button "Next".



11. Press button "Continue Anyway"



12. Press button "Finish". Installation of USB driver is now completed.



Note The USB connected BM800 will show as standard RS232 COM port. See the manual on how to configure PC/BDI to use USB ports.

The USB driver is instrument dependent, i.e. if you connect an additional BM800 to the same PC, USB drivers for that individual BM800 needs to be installed again.